

临床解剖在颈肩部 疾病的应用

Jian An Guo 郭建安

中医针灸师如何掌握及运用解剖知识

- 1、以骨骼肌肉的精确触诊为基础，
- 2、以神经血管走行为导向，
- 3、以生物力学薄弱区为切入点，
- 4、紧密结合经络循行（包括经筋、皮部等）和腧穴定位。

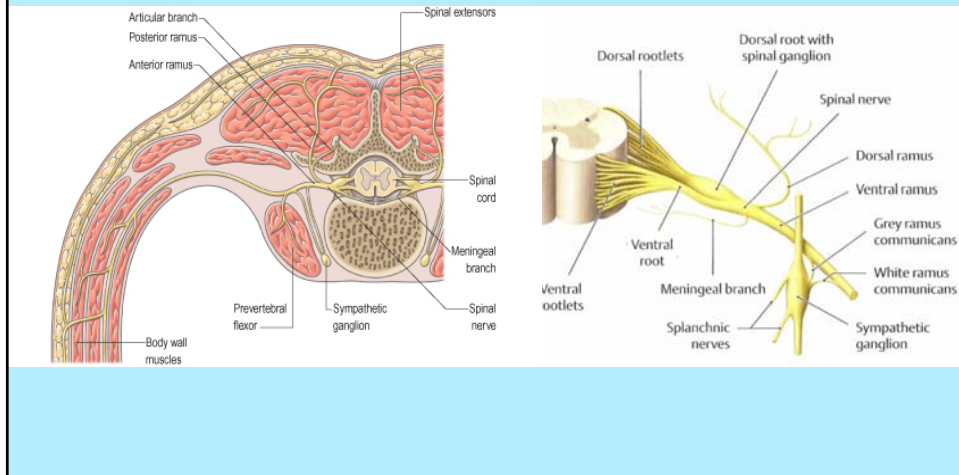
一、颈肩部骨性结构及临床触诊

枕外隆凸 上项线 下项线 乳突 寰椎横突
枢椎棘突 隆椎棘突 颈椎关节突关节 颈椎
椎间孔 横突孔 横突前结节 横突后结节
颈椎棘突 舌骨 甲状软骨 环状软骨 颈动
脉结节 胸骨上窝 锁骨上大窝 锁骨上小窝
肩胛冈 肩峰角 肩峰 喙突 肱骨大结节
肱骨小结节 三角肌粗隆

二、颈丛解剖在颈项部的临床应用

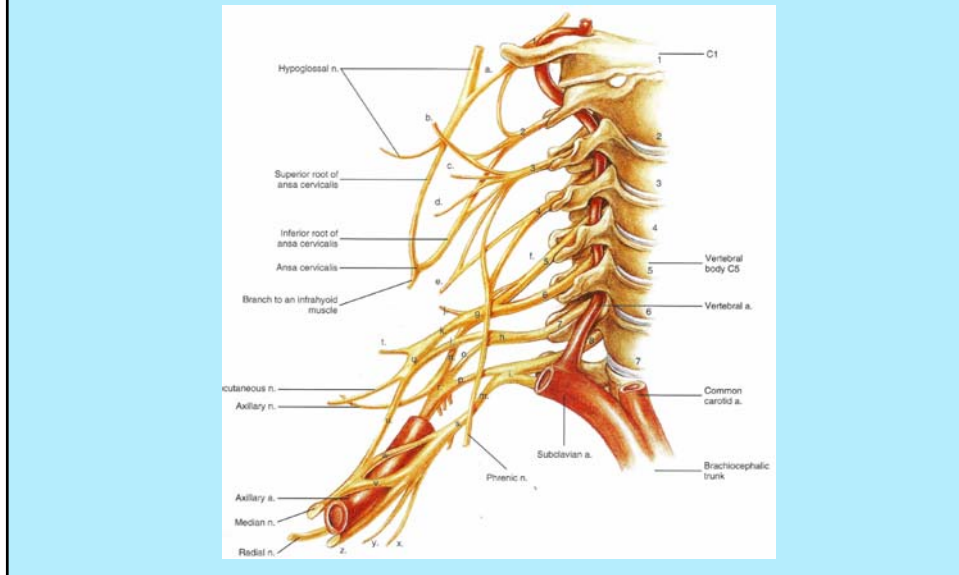
- 1、脊神经概述
- 2、颈丛的分支及临床应用

脊神经分支



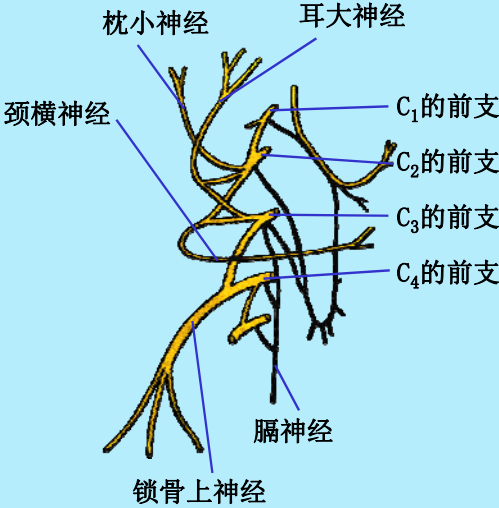
颈丛和臂丛神经

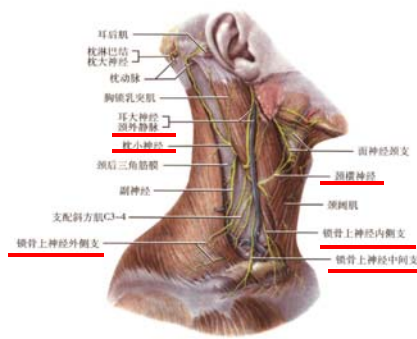
Cervical plexus and brachial plexus



颈丛概述

Overview of cervical plexus





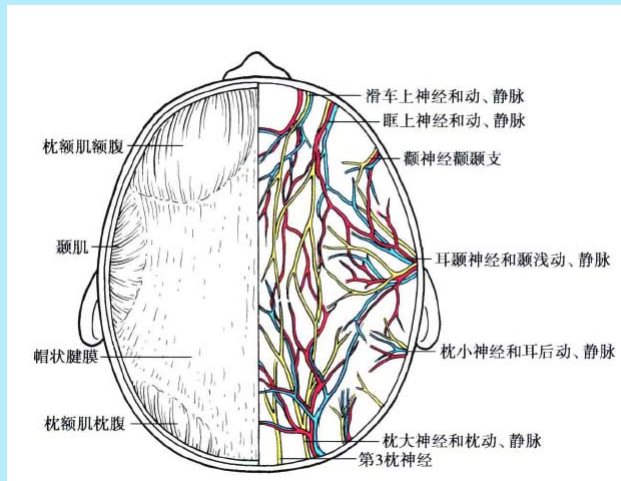
颈丛的分支及临床应用

Branches of cervical plexus and clinical application

1. 枕小神经 lesser occipital nerve (C2)
2. 耳大神经 great auricular nerve (C2~C3)
3. 颈横神经 transverse nerve of neck (C2~C3)
4. 锁骨上神经 supraclavicular nerves (C3~C4)
5. 膈神经 phrenic nerve (C3~C5)

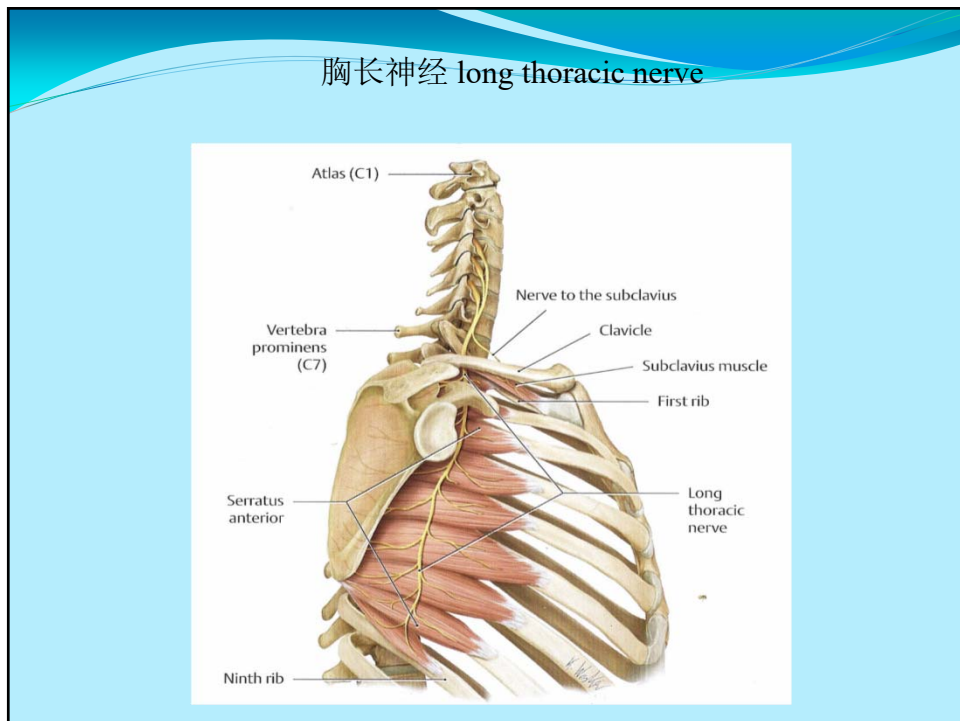
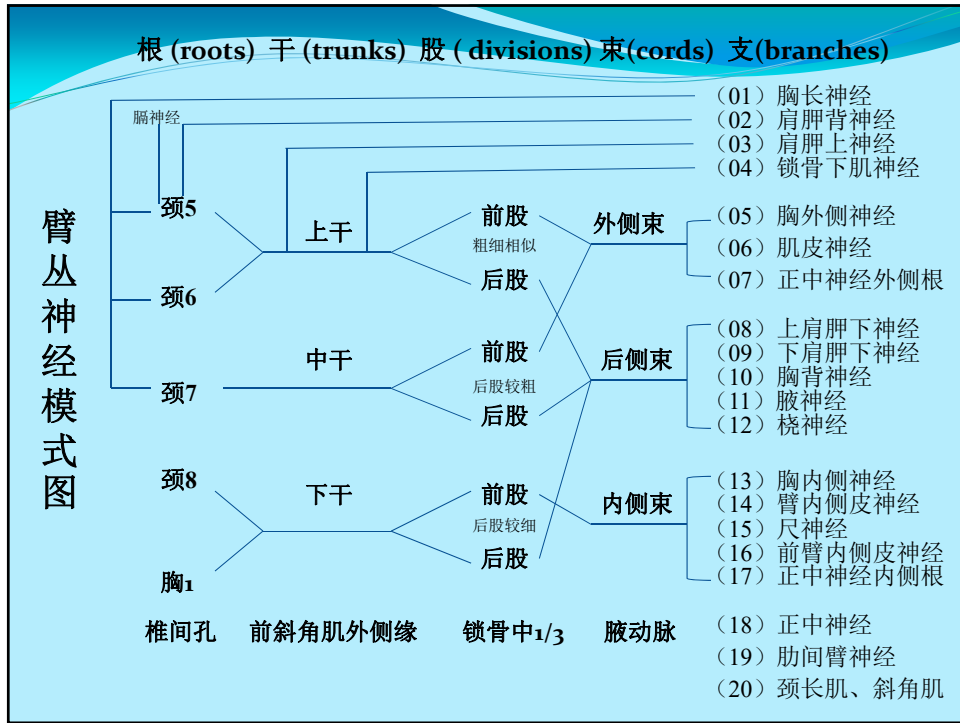
枕下神经 suboccipital nerve (C1)
 枕大神经 great occipital nerve (C2)
 第三枕神经 third occipital nerve (C3)

颅顶区血管和神经分布

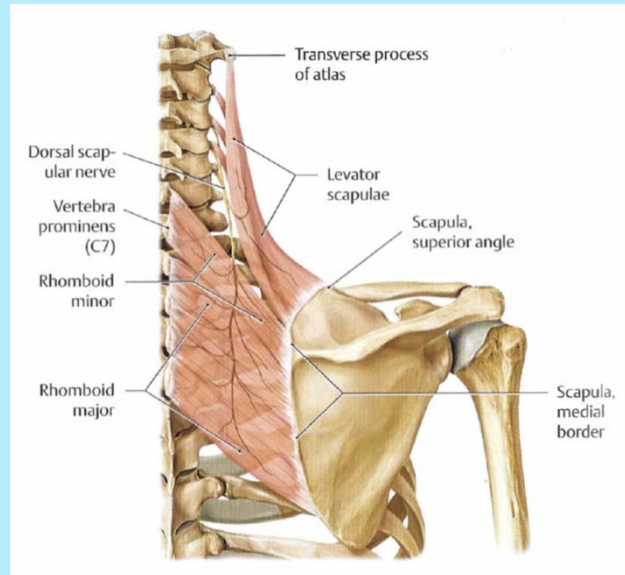


三、臂丛神经在颈肩部的临床应用

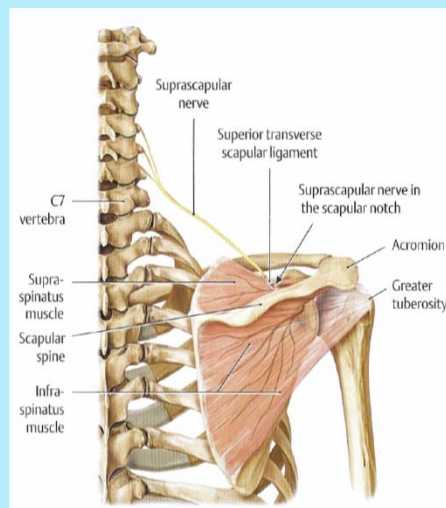
- 1、臂丛神经的概述
- 2、臂丛神经分支
- 3、臂丛神经解剖的在颈肩部的临床应用



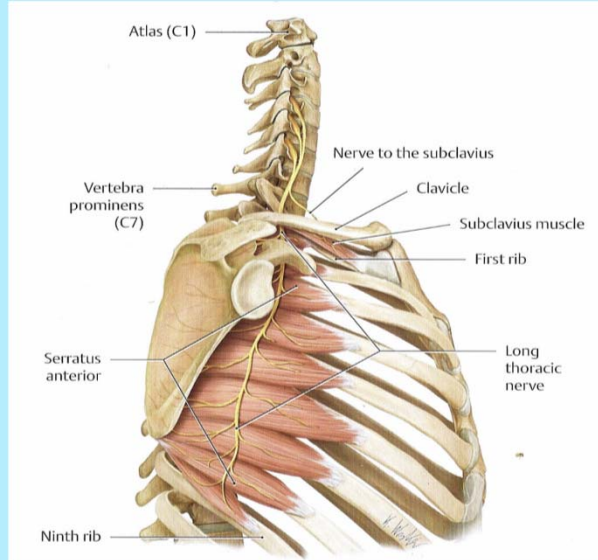
肩胛背神经 dorsal scapular nerve



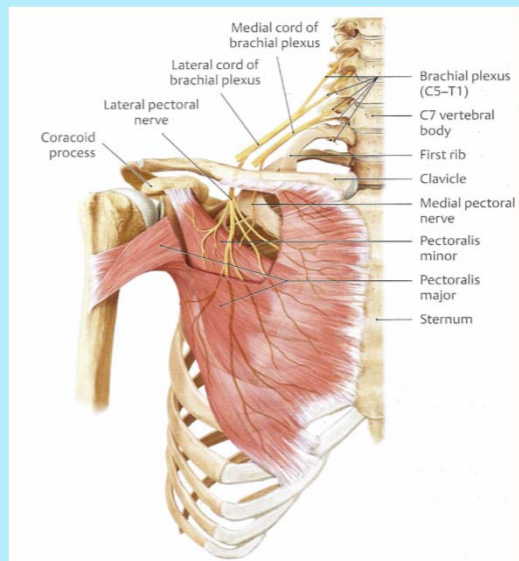
肩胛上神经 suprascapular nerve



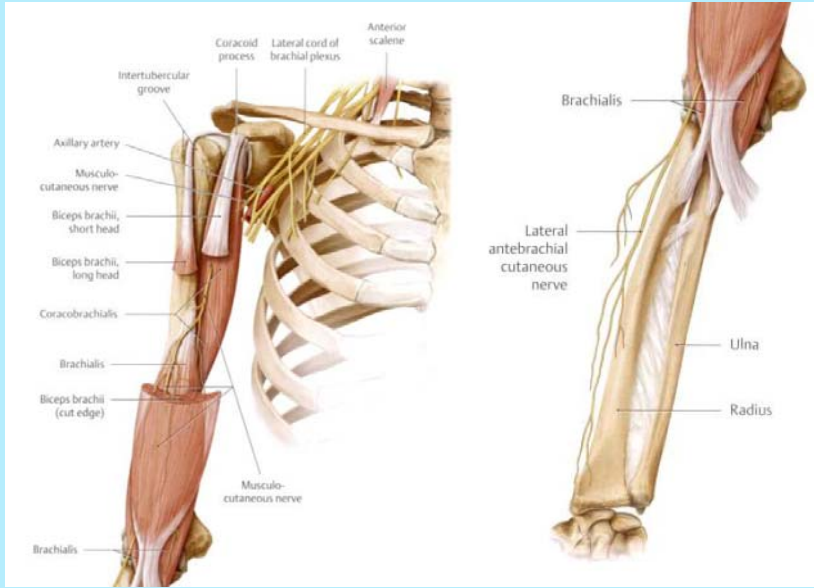
锁骨下神经Subclavian nerve



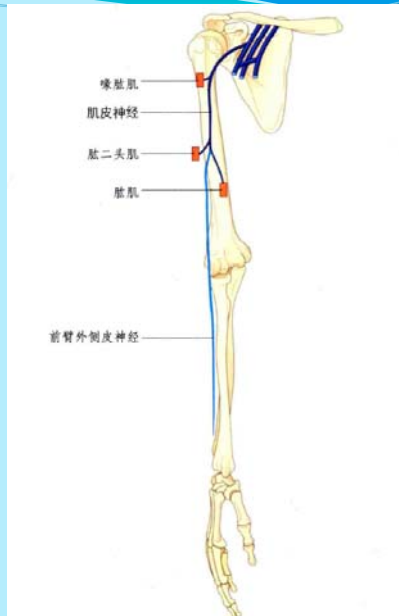
胸外侧神经



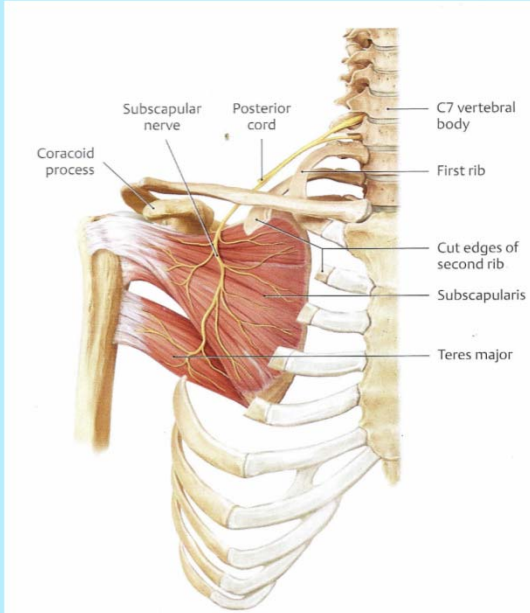
肌皮神经



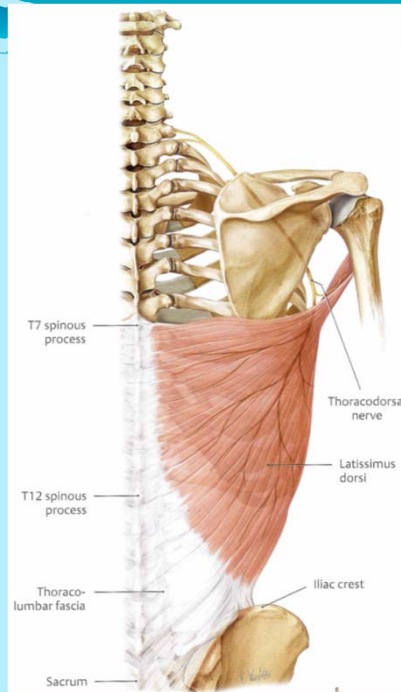
肌皮神经



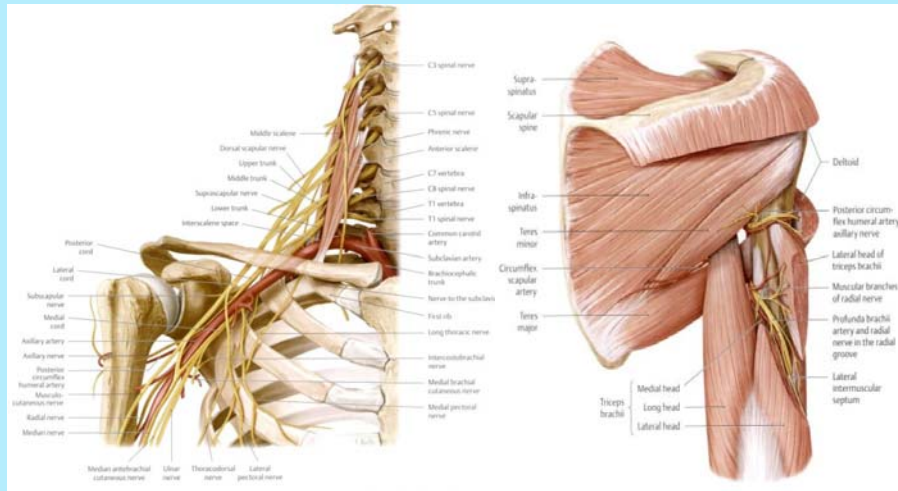
肩胛下神经上支和肩胛下神经下支



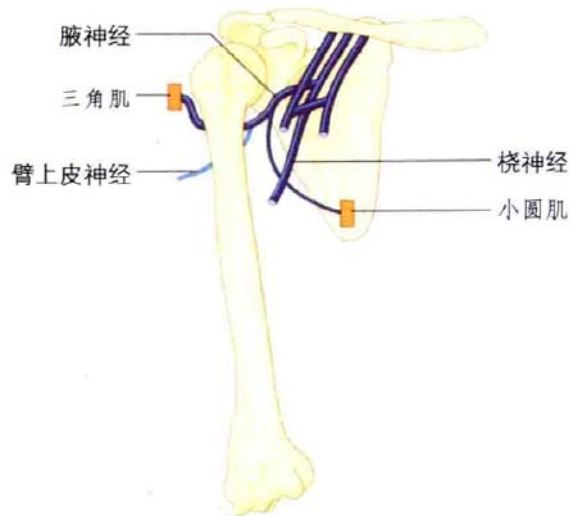
胸背神经thoracodorsal nerve



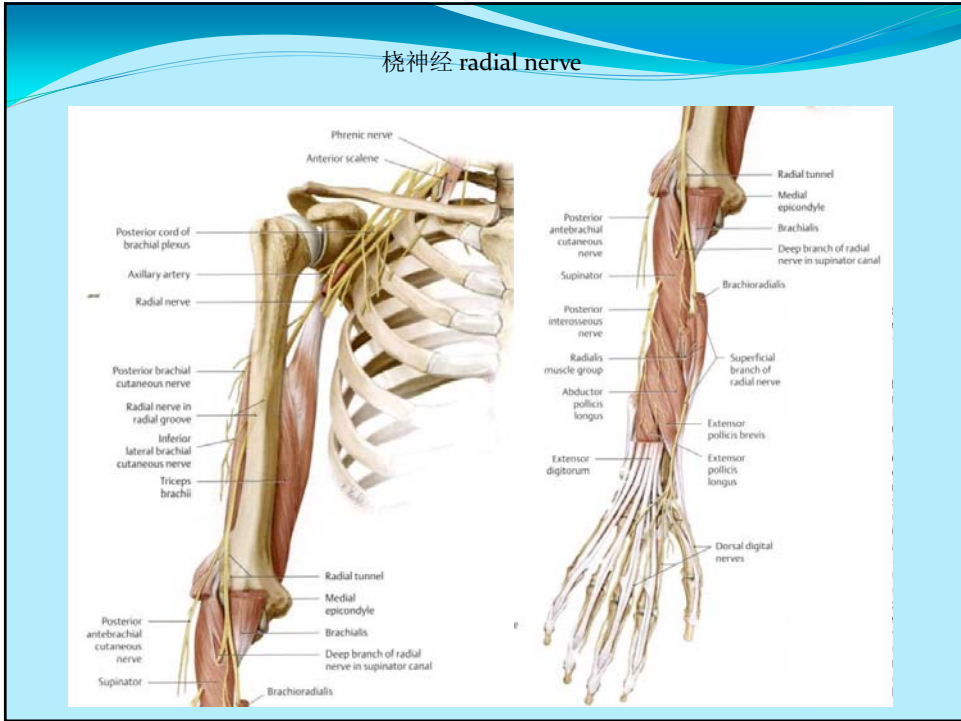
腋神经 axillary nerve (C5-C6)



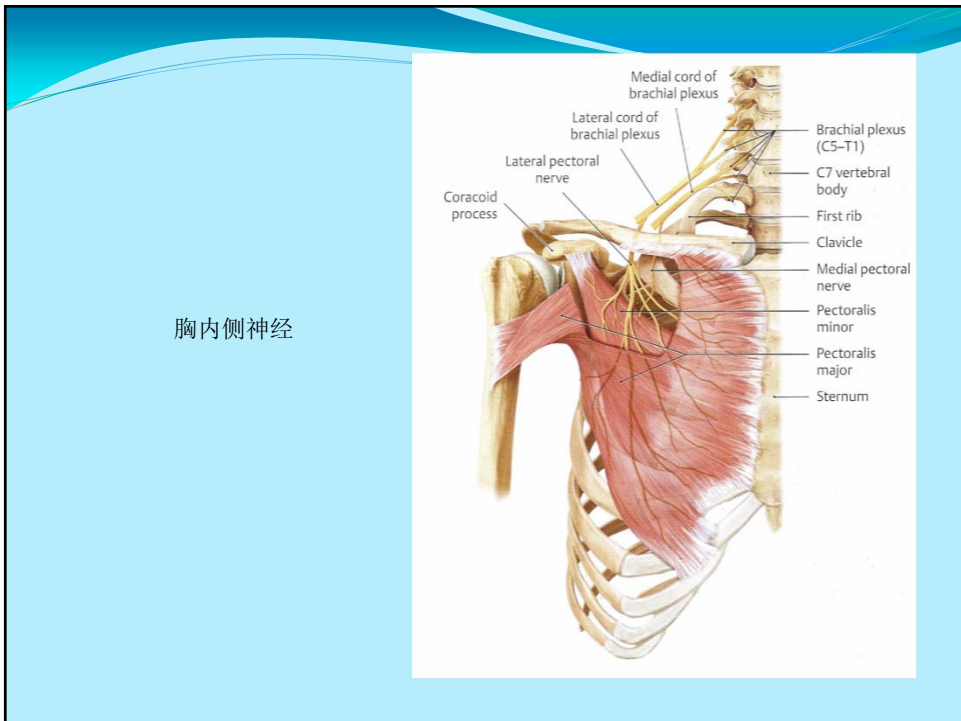
腋神经 axillary nerve



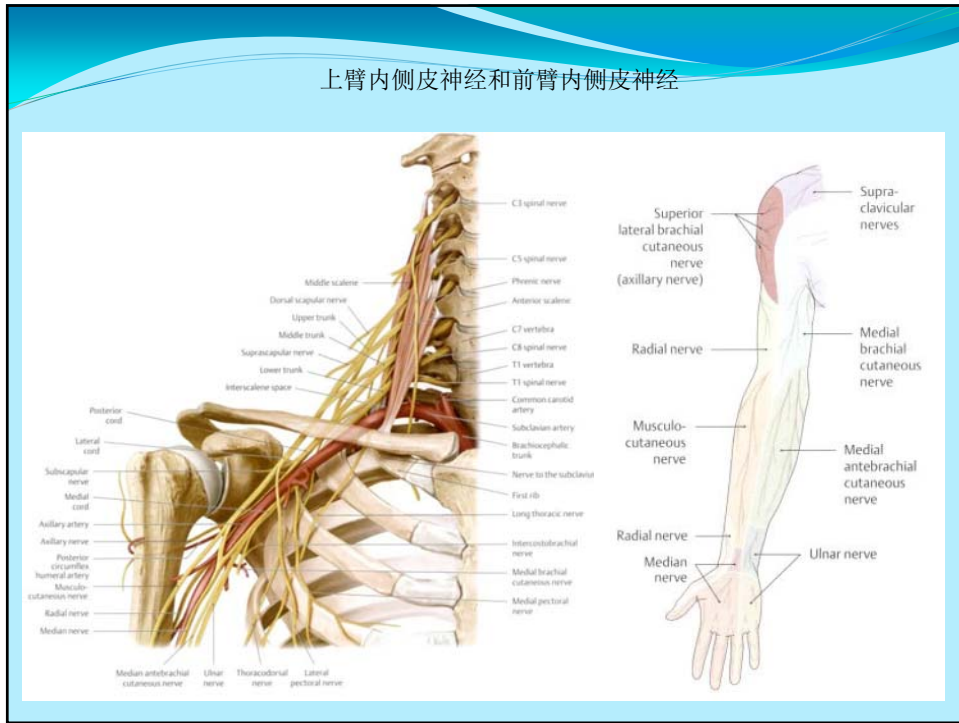
桡神经 radial nerve



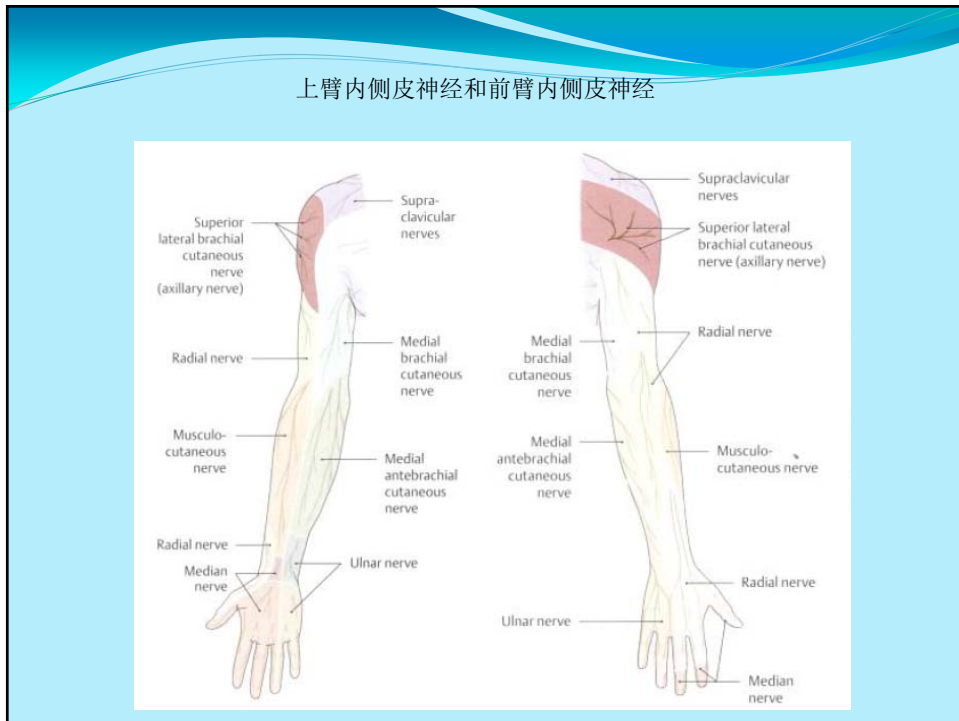
胸内侧神经



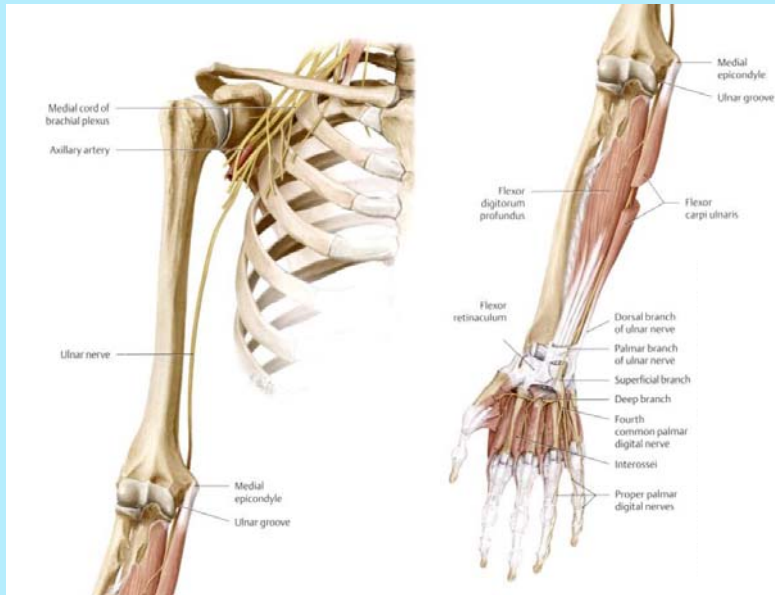
上臂内侧皮神经和前臂内侧皮神经



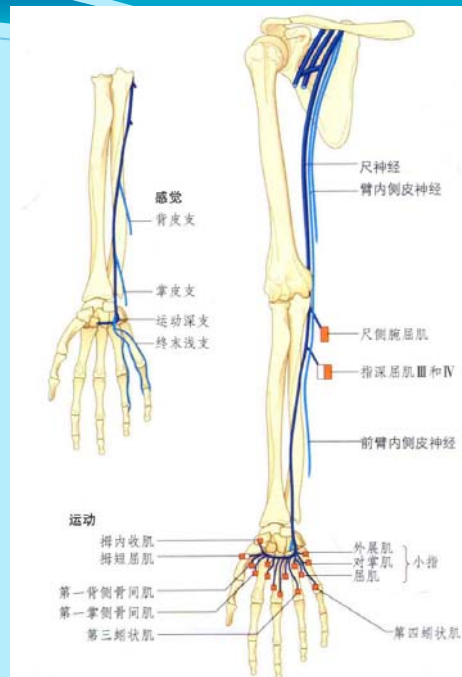
上臂内侧皮神经和前臂内侧皮神经



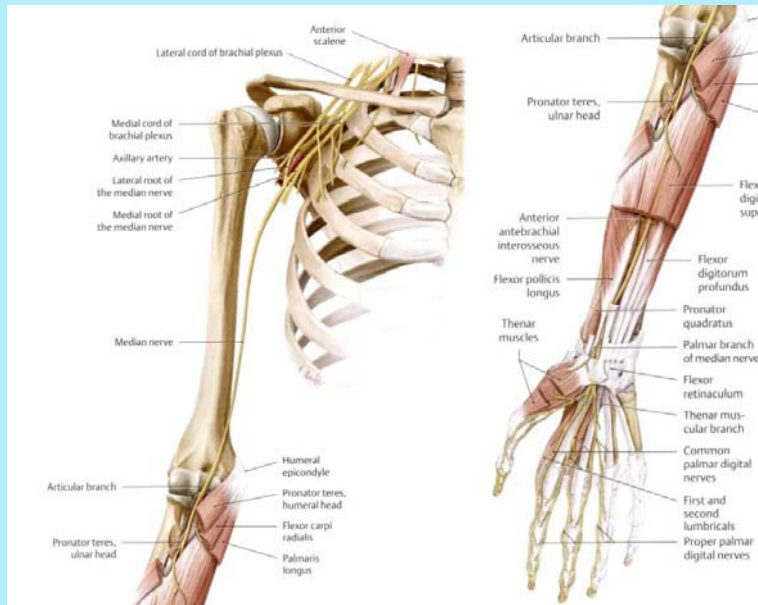
尺神经 ulnar nerve



尺神经



正中神经



正中神经

